



Department  
for Education

# **Mainstream academy and free school: supplemental funding agreement**

**March 2018 v6**

# Contents

SUMMARY SHEET	<b>4</b>
Information about the Academy:	4
<b>1. ESTABLISHING THE ACADEMY</b>	<b>8</b>
Definitions and interpretation	8
The Academy	9
<b>2. RUNNING OF THE ACADEMY</b>	<b>9</b>
Teachers and staff	9
Pupils	10
SEN unit	10
Charging	10
Admissions	11
Curriculum	133
<b>3. GRANT FUNDING</b>	<b>14</b>
Calculation of GAG	14
Other relevant funding	166
<b>4. LAND</b>	<b>17</b>
<b>5. TERMINATION</b>	<b>21</b>
Termination by either party	21
Termination Warning Notice	22
Termination by the Secretary of State after inspection	23
Termination by the Secretary of State	23
Funding and admission during notice period	25
Notice of intention to terminate by Academy Trust	25

Effect of termination	28
<b>6. OTHER CONTRACTUAL ARRANGEMENTS</b>	<b>29</b>
Annexes	29
The Master Agreement	29
General	29
<b>ANNEXES</b>	<b>32</b>
<b>7. ADMISSION OF CHILDREN AND YOUNG PEOPLE WITH EDUCATION, HEALTH AND CARE PLANS</b>	<b>32</b>
<b>8. ADMISSION OF CHILDREN WITH A STATEMENT OF SPECIAL EDUCATIONAL NEEDS</b>	<b>32</b>
Plan 123/WAV/MAJ/A3	35
Dwg No 3E11296	36

## **SUMMARY SHEET**

### **Information about the Academy:**

<b>Name of Academy Trust</b>	Aston Community Education Trust (ACET)
<b>Company number</b>	07577113
<b>Date of Master Funding Agreement</b>	29 April 2020
<b>Name of academy</b>	Waverley Junior Academy
<b>Opening date</b>	1 September 2020
<b>Type of academy (indicate whether academy or free school)</b>	Free school
<b>Religious designation</b>	N/A
<b>Wholly or partly selective</b>	N/A
<b>Name of predecessor school (where applicable)</b>	N/A
<b>Capacity number</b>	Nursery 26 School 420
<b>Age range</b>	2 to 11
<b>Number of sixth form places</b>	N/A
<b>Number of boarding places</b>	N/A
<b>SEN unit / Resource provision</b>	Mainstream school with SEN provision. SEN Priority 1: Autistic Spectrum Disorder (ASD) 10 spaces
<b>Land arrangements</b>	Version 7: new leasehold site
<b>Address and title number of Land</b>	Temporary Site: Part of the Thurcroft Junior Academy Green Arbour Road Thurcroft Rotherham S66 9DD  Part of Title number: RB33457 as shown edged red on the "Thurcroft Junior School" plan attached labelled "Dwg No 3E11296"

<b>Name of Academy Trust</b>	Aston Community Education Trust (ACET)
	<p>Permanent Site: Waverley Junior Academy  Waverley Walk  Highfield Lane  Waverley  Rotherham S60 8DD</p> <p>Part of Title number: SYK590199 as shown  edged red on the plan attached labelled  “123/WAV/MAJ/A3”</p>

Clause No.	Descriptor	Applied	Not used
1.I	Only applies to free schools and new provision academies	X	
2.A.1	Clause applies where an academy was previously a VC or foundation school designated with a religious character		X
2.C, 2.D	Only applies where the academy has an SEN unit	X	
2.E	Only applies where there was a predecessor independent school		X
2.E.1	Only applies to Free schools with nursery provision	X	
2.G	Clause does not apply to free schools (unless there was a predecessor independent school), or new provision academies		X
2.M	Clause applies only to academies and free schools designated with a religious character		X
2.N	Clause applies only to academies that were formerly wholly selective grammar schools		X
2.O	Clause applies only to academies that were formerly partially selective grammar schools		X
2.T	Clause applies to free schools and new provision academies designated with a religious character		X
2.W	Clause only applies where the academy is designated with a religious character		X
2.X	Clause only applies where the academy has not been designated with a religious character	X	
2.Y	Clause applies where an academy was previously a VC school or foundation school designated with a religious character		X
2.Yc)	Sub-clause applies if the academy is designated with a denominational religious		X

Clause No.	Descriptor	Applied	Not used
	character – CE etc. rather than ‘Christian’		
3.A – 3.F	Option 1 applies to converter and sponsored academies: if used delete option 2		X
3.A – 3.F	Option 2 applies to free schools and new provision academies: if used delete option 1	X	
3.H	Clause relating to Start-up only applies in some cases (does not apply to academy converters)		X
3.I.1	Only applies to Free schools with nursery provision	X	
3.J	Clause only applies to full sponsored and intermediate sponsored academies with approved Academy Action Plans		X
3.K	Clause does not apply to free schools (unless there was a predecessor independent school), or new provision academies		X
5.G.1	Clause applies only to a boarding academy/free school.		X
5.I	Clause only applies to sponsored academies		X
5.K	Clause applies to free schools and may be applied to new provision academies	X	
5.L	Clause applies to free schools and may be applied to new provision academies	X	
5.M	Clause applies to free schools and may be applied to new provision academies	X	
5.N	Clause applies to free schools and may be applied to new provision academies		X
5.O	Clause applies to free schools and may be applied to new provision academies	X	
6.H	Clause only applies to schools which are designated with a Church of England or Roman Catholic character		X

## 1. **ESTABLISHING THE ACADEMY**

- 1.A This Agreement made between the Secretary of State for Education and Aston Community Education Trust (ACET) is supplemental to the master funding agreement made between the same parties and dated (the “**Master Agreement**”).

### **Definitions and interpretation**

- 1.B Except as expressly provided in this Agreement words and expressions defined in the Master Agreement will have those same meanings in this Agreement.

- 1.C The following capitalised words and expressions will have the following meanings:

“The **Academy**” means the Waverley Junior Academy.

“**Coasting**” has the meaning given by regulations under subsection (3) of section 60B of the Education and Inspections Act 2006 in relation to a school to which that section applies.

“**Funded Hours**” means the current applicable government funded entitlement to free childcare.

“**SEN**” means Special Educational Needs and the expressions “**special educational needs**” and “**special educational provision**” have the meaning set out in sections 20(1) and 21(2) of the Children and Families Act 2014.

“**Termination Notice**” means a notice sent by the Secretary of State to the Academy Trust, terminating this Agreement on the date specified in the notice.

“**Termination Warning Notice**” means a notice sent by the Secretary of State to the Academy Trust, stating his intention to terminate this Agreement.

- 1.D The Interpretation Act 1978 applies to this Agreement as it applies to an Act of Parliament.

- 1.E Reference in this Agreement to clauses and annexes will, unless otherwise



stated, be to clauses and annexes to this Agreement.

## **The Academy**

- 1.F The Academy is a Free School as defined in clause 1.4 of the Master Agreement.
- 1.G The Academy Trust will establish and maintain the Academy in accordance with the Master Agreement and this Agreement.
- 1.H The Academy Trust will open the Academy on 1 September 2020.
- 1.I The Academy Trust must ensure that so far as is reasonably practicable and consistent with clause 2.X of this Agreement and the Equality Act 2010, the policies and practices adopted by the Academy (in particular regarding curriculum, uniform and school food) enable pupils of all faiths and none to play a full part in the life of the Academy, and do not disadvantage pupils or parents of any faith or none. For the avoidance of doubt, this requirement applies irrespective of the proportion of pupils of any faiths or none currently attending or predicted to join the school.

## **2. RUNNING OF THE ACADEMY**

### **Teachers and staff**

- 2.A Subject to clause 2.A.2 and 7.A of this Agreement and section 67 of the Children and Families Act 2014, the Academy Trust may, in accordance with any relevant Guidance, employ anyone it believes is suitably qualified or is otherwise eligible to plan and prepare lessons and courses for pupils, teach pupils, and assess and report on pupils' development, progress and attainment.
- 2.A.1 Not used
- 2.A.2 The Academy Trust must designate a staff member at the Academy as responsible for promoting the educational achievement of registered pupils at the Academy who are being looked after by an LA, or are no longer looked

after by an LA because of an adoption, special guardianship or child arrangements order, or because they have been adopted from 'state care' outside England and Wales, and in doing so must comply with the law, regulations and guidance that apply to maintained schools. The Academy Trust must ensure the designated person undertakes appropriate training and has regard to any guidance issued by the Secretary of State.

## **Pupils**

2.B The planned capacity of the Academy is 420 in the age range 2-11, plus nursery provision of 26 places. The Academy will be an all ability inclusive school.

## **SEN unit**

2.C The Academy must operate designated places reserved for pupils with SEN (SEN Unit or Resourced Provision) with up to 10 planned places for pupils with Autism spectrum disorder (ASD) in the age range 2 to 11.

2.D The Secretary of State may at any time determine that the SEN Unit or Resourced Provision should cease to operate. In making such a determination, the Secretary of State will:

- a) consider the views of the Academy and relevant LAs (in their strategic role in the commissioning of SEN provision); and
- b) consider how his determination will affect the LAs' ability to secure suitable SEN provision for children in the area.

## **Charging**

2.E Not used

2.E.1 Clause 2.16 of the Master Funding Agreement does not prevent the Academy Trust charging fees for nursery provisions outside the Funded Hours.

## Admissions

- 2.F Subject to clauses 2.K– 2.L the Academy Trust will act in accordance with, and will ensure that its Independent Appeal Panel is trained to act in accordance with, the School Admissions Code and School Admission Appeals Code published by the DfE (the “Codes”) and all relevant admissions law as they apply to foundation and voluntary aided schools, and with equalities law. Reference in the Codes or legislation to “admission authorities” will be deemed to be references to the Academy Trust.
- 2.G Not used
- 2.H The Academy Trust must participate in the local Fair Access Protocol. The Academy Trust must participate in the coordinated admission arrangements operated by the LA in whose area the Academy is situated. If the Academy is a free school, the Academy Trust is not required to participate in coordination for its first intake of pupils.
- 2.I Not used
- 2.J Not used
- 2.K Not used
- 2.L The Secretary of State may:
- a) direct the Academy Trust to admit a named pupil to the Academy:
    - i. following an application from an LA including complying with a school attendance order as defined in section 437 of the Education Act 1996. Before doing so the Secretary of State will consult the Academy Trust; or
    - ii. where in relation to a specific child or children the Academy Trust has failed to act in accordance with the Codes or this Agreement or has otherwise acted unlawfully; or
  - b) direct the Academy Trust to amend its admission arrangements where

they do not comply with the Codes or this Agreement, or are otherwise unlawful.

- 2.M Not used
- 2.N Not used
- 2.O Not used
- 2.P The Academy Trust must make arrangements to ensure an independent appeals panel is established for the Academy and its clerk and members are trained to act in accordance with the Codes. The Academy Trust must ensure that parents and ‘relevant children’ (as described in the Codes) are informed of their right to appeal to an Independent Appeal Panel if they are dissatisfied with an admission decision of the Academy Trust. The arrangements for appeals must comply with the Codes as they apply to foundation and voluntary aided schools. The determination of the appeal panel is binding on all parties.
- 2.Q Subject to clause 2.R, the meaning of “**relevant area**” for the purposes of consultation requirements in relation to admission arrangements is that determined by the relevant LA for maintained schools in the area in accordance with the Education (Relevant Areas for Consultation on Admission Arrangements) Regulations 1999.
- 2.R If the Academy does not consider the relevant area determined by the LA for the maintained schools in the area to be appropriate, it must apply to the Secretary of State by 1 August before the academic year in question for a determination of the appropriate relevant area for the Academy, setting out the reasons for this view. The Secretary of State will consult the Academy Trust and the LA in whose area the Academy is situated in reaching a decision.
- 2.S The Office of the Schools Adjudicator (“OSA”) will consider objections to the Academy’s admission arrangements (except objections against any agreed derogations from the provisions of the Codes specified in this funding

agreement, over which it has no jurisdiction). The Academy Trust must therefore make it clear, when determining the Academy's admission arrangements, that objections should be submitted to the OSA. The OSA's determination of an objection is binding on the Academy and the Academy Trust must make appropriate changes to its admission arrangements to give effect to the Adjudicator's decision within two months of the decision (or by 28 February following the decision, whichever is sooner), unless an alternative timescale is specified by the Adjudicator.

2.T Not used

## Curriculum

2.U The Academy Trust must provide for the teaching of religious education and a daily act of collective worship at the Academy.

2.V The Academy Trust must comply with section 71(1)-(6) and (8) of the School Standards and Framework Act 1998 as if the Academy were a community, foundation or voluntary school, and as if references to "religious education" and "religious worship" in that section were references to the religious education and religious worship provided by the Academy in accordance with clause 2.X.

2.W Not used

2.X Subject to clause 2.V, **where the academy has not been designated with a religious character** (in accordance with section 124B of the School Standards and Framework Act 1998 or further to section 6(8) of the Academies Act 2010):

- a) provision must be made for religious education to be given to all pupils at the Academy in accordance with the requirements for agreed syllabuses in section 375(3) of the Education Act 1996 and paragraph 2(5) of Schedule 19 to the School Standards and Framework Act 1998;

- b) the Academy must comply with section 70(1) of, and Schedule 20 to, the School Standards and Framework Act 1998 as if it were a community, foundation or voluntary school which does not have a religious character, except that paragraph 4 of that Schedule does not apply. The Academy may apply to the Secretary of State for consent to be relieved of the requirement imposed by paragraph 3(2) of that Schedule.

2.Y Not used

2.Z The Academy Trust must have regard to any Guidance, further to section 403 of the Education Act 1996, on sex and relationship education to ensure that children at the Academy are protected from inappropriate teaching materials and that they learn the nature of marriage and its importance for family life and for bringing up children. The Academy Trust must also have regard to the requirements in section 405 of the Education Act 1996, as if the Academy were a maintained school.

2.AA The Academy Trust must prevent political indoctrination, and secure the balanced treatment of political issues, in line with the requirements for maintained schools set out in the Education Act 1996, and have regard to any Guidance.

### 3. **GRANT FUNDING**

#### **Calculation of GAG**

3.A Subject to clause 3.C, the basis of the pupil number count for the purposes of determining GAG for an Academy Financial Year will be the Academy Trust's most recent estimate provided in accordance with clause 3.B.

3.B The Secretary of State will, in advance of each Academy Financial Year for the Academy, request that the Academy Trust provides an estimate of the number of pupils on roll in the following September for the purposes of determining GAG for an Academy Financial Year. The Academy Trust must provide the requested estimate to the Secretary of State as soon as

reasonably practicable.

- 3.C In the Academy Financial Year which immediately follows the Academy Financial Year in which all planned year groups will be present at the Academy (that is, all the pupil cohorts relevant to the age range of the Academy will have some pupils present), the basis of the pupil number count for the purpose of determining GAG will no longer be the estimate provided in accordance with clause 3.B, but in that and all following Academy Financial Years will be determined in accordance with clause 3.F.
- 3.D For any Academy Financial Year in which GAG for the Academy has been calculated in accordance with clauses 3.A and 3.B, an adjustment may be made to the following Academy Financial Year's formula funding element of GAG for the Academy to recognise any variation from that estimate. The Secretary of State may for this purpose use the Census for the relevant month (determined at the Secretary of State's discretion) for the Academy Financial Year in question as a means of determining pupil numbers. The additional or clawed-back grant will be only the amount relevant to the number of pupils above or below that estimate.
- 3.E Not used
- 3.F For Academy Financial Years which immediately follow the Academy Financial Year in which all planned year groups will be present at the Academy, the basis of the pupil count for determining GAG will be:
- a) for pupils in Year 11 and below, the Schools Census which is used to fund maintained schools for the financial year overlapping with the Academy Financial Year in question; and
  - b) for pupils in Year 12 and above, the formula which is in use at the time for maintained schools
- 3.G The Secretary of State may, at his discretion, adjust the basis of the pupil count to take account of any diseconomies of scale which may affect the Academy if it is operating below the planned capacity in clause 2.B. If such an

adjustment is made in any Academy Financial Year, this will not change the basis of the pupil count for calculating the following Academy Financial Year's GAG. If the Secretary of State has indicated that additional grant may be payable in such circumstances, the Academy Trust will bid for this additional grant based on need and providing appropriate supporting evidence. The Secretary of State may accept or refuse the bid at his discretion.

3.H Not used

3.I The Secretary of State recognises that if a Termination Notice or a Termination Warning Notice is served, or the Master Agreement is otherwise terminated, the intake of new pupils during the notice period may decline and therefore payments based on the number of pupils attending the Academy may be insufficient to meet the Academy's needs. In these circumstances the Secretary of State may pay a larger GAG in the notice period, to enable the Academy to operate effectively.

3.I.1 For the avoidance of doubt, the pupil number count for the purposes of determining GAG does not include nursery provision pupils. Clauses 3.A-3.I must be read with this exclusion in mind.

### **Other relevant funding**

3.J Not used

3.K Not used

### **Carrying forward of funds**

3.L Any additional grant made in accordance with clause 3.I, for a period after the Secretary of State has served a Termination Notice or a Termination Warning Notice under this Agreement, or otherwise terminates the Master Agreement, may be carried forward without limitation or deduction until the circumstances set out in clause 3.I cease to apply or the Academy closes.



#### 4. **LAND**

**“Land”** means (i) temporary site: the land at Thurcroft Junior Academy, Green Arbour Road, Thurcroft, Rotherham, South Yorkshire S66 9DD, being part of the land registered with title number RB33457 as shown edged red on the plan attached labelled “Dwg No 3E11296”; (ii) permanent site: the land at Waverley Junior Academy, Waverley Walk, Highfield Land, Rotherham, South Yorkshire S60 8DD, being part of the land registered with title number SYK590199 as shown edged red on the plan attached labelled “123/WAV/MAJ/A3” and demised by the Lease.

**“Lease”** means the lease or other occupational agreement between the Academy Trust and a third party (the **“Landlord”**) under which the Academy Trust derives title to the Land.

**“Property Notice”** means any order, notice, proposal, demand or other requirement issued by any competent authority (including the Landlord) which materially affects the Academy Trust’s ability to use the Land for the purposes of the Academy.

**“Temporary Site”** means the land occupied by the Academy Trust at Thurcroft Junior Academy, Green Arbour Road, Thurcroft, Rotherham S66 9DD

#### **Restrictions on Land transfer**

4.A The Academy Trust must:

- a) within 28 days of the signing of this Agreement in circumstances where the Land is transferred to the Academy Trust prior to the date of this Agreement, or otherwise within 28 days of the transfer of the Land to the Academy Trust, apply to the Land Registry using Form RX1 for the following restriction (the “Restriction”) to be entered in the proprietorship register for the Land:

*“No disposition of the registered estate by the proprietor of the registered estate is to be registered without a written consent signed by the Secretary of State for Education, of Sanctuary Buildings, Great Smith Street, London SW1P 3BT”;*

- b) take any further steps required to ensure that the Restriction is entered on the proprietorship register;
- c) promptly confirm to the Secretary of State when the Restriction has been registered;
- d) if it has not registered the Restriction, allow the Secretary of State to do so in its place; and
- e) not, without the Secretary of State's consent, apply to disapply, modify, cancel or remove the Restriction, whether by itself, a holding company, a subsidiary company, or a receiver, administrator or liquidator acting in the name of the Academy Trust.

### **Obligations of the Academy Trust**

- 4.B The Academy Trust must comply with the Lease and promptly enforce its rights against the Landlord. The Academy Trust must keep the Temporary Site clean and tidy and make good any damage or deterioration to the Temporary Site.
- 4.C The Academy Trust must not, without the Secretary of State's consent:
  - a) terminate, renew, vary, surrender, dispose of or agree any revised rent under the Lease; or
  - b) grant any consent or licence; or
  - c) create or allow any encumbrance; or
  - d) part with or share possession or occupation; or
  - e) enter into any onerous or restrictive obligations,
 in respect of all or part of the Land.
- 4.D The Academy Trust must obtain the Secretary of State's consent before taking any action, including the service of any notice or waiver of any condition, under any contract relating to the acquisition of the Land.

- 4.E If the Academy Trust is, or if it is reasonably foreseeable that it will be, in material breach of the Lease, the Academy Trust must immediately give written notice to the Secretary of State stating what the breach is and what action the Academy Trust has taken or proposes to take to remedy it, including timescales where appropriate.
- 4.F After notifying the Secretary of State under clause 4.E, the Academy Trust must:
- a) promptly give the Secretary of State all the information he asks for about the breach;
  - b) allow the Secretary of State to take all necessary action, with or instead of the Academy Trust, to remedy or prevent the breach, and
  - c) use its best endeavours to help the Secretary of State to remedy or prevent the breach.
- 4.G If the Academy Trust has not entered into the Lease by 1 September 2020, the Secretary of State may serve a Termination Notice.

### **Property Notices**

- 4.H If the Academy Trust receives a Property Notice, it must:
- a) send a copy of it to the Secretary of State within 14 days, stating how the Academy Trust intends to respond to it;
  - b) promptly give the Secretary of State all the information he asks for about it;
  - c) allow the Secretary of State to take all necessary action, with or instead of the Academy Trust, to comply with it, and
  - d) use its best endeavours to help the Secretary of State in connection with it.

## Option

- 4.I The Academy Trust grants and the Secretary of State accepts an option (the “**Option**”) to acquire the Land at nil consideration. The Secretary of State may exercise the Option in writing if this Funding Agreement is terminated for any reason, or if the Academy Trust cannot use all or part of the Land as the permanent site of the Academy under clause 4.K. If the Option is exercised, completion will take place 28 days after the exercise date in accordance with the Law Society’s Standard Conditions of Sale for Commercial Property in force at that date.

## Option Notice

- 4.J The Academy Trust:
- a) must, within 14 days after acquiring the Land or, if later, after signing this Agreement, apply to the Land Registry on Form AN1 (including a copy of this Agreement) for a notice of the Option (the “**Option Notice**”) to be entered in the register, taking any further steps required to have the Option Notice registered and promptly confirming to the Secretary of State when this has been done;
  - b) if it has not registered the Option Notice, agrees that the Secretary of State may apply to register it using Form UN1;
  - c) must not, without the Secretary of State’s consent, apply to disapply, modify or remove the Option Notice, whether by itself, a holding company, a subsidiary company, or a receiver, administrator or liquidator acting in the name of the Academy Trust, and
  - d) must, in the case of previously unregistered land, within 14 days after acquiring the Land or, if later, after signing this Agreement, apply to register a Class C(iv) land charge in the Land Charges Registry, and send the Secretary of State a copy of the relevant entry within 7 days after registration has been completed. If the Secretary of State considers that the Academy Trust has not complied with this clause, he

may apply to secure the registration.

#### **Land not used for the purposes of the academy**

- 4.K If the Academy Trust cannot use all or part of the Land as the permanent site of the Academy but the Secretary of State agrees not to terminate this Agreement on that basis, the Secretary of State may notify the Academy Trust that he intends to exercise the Option to transfer the Land for nil consideration to himself or his nominee.

#### **Sharing the Land**

- 4.L If:
- a) the Academy does not reach its planned capacity, as stated in clause 2.B, within seven Academy Financial Years; or
  - b) the Academy Trust or the Secretary of State serves notice to terminate this Agreement under clause 5.A; or
  - c) the Secretary of State considers that not all the Land is needed for the operation of the Academy at planned capacity,

the Academy Trust must share occupation of the Land with such other Academy as the Secretary of State considers appropriate and enter into any legal arrangements which the Secretary of State requires for this purpose.

### **5. TERMINATION**

#### **Termination by either party**

- 5.A Either party may give at least seven Academy Financial Years' notice to terminate this Agreement. Such termination would take effect on 31 August of the relevant year.

## **Termination Warning Notice**

5.B The Secretary of State may serve a Termination Warning Notice where he considers that:

- a) the Academy Trust has breached the provisions of this Agreement or the Master Agreement; or
- b) the standards of performance of pupils at the Academy are unacceptably low; or
- c) there has been a serious breakdown in the way the Academy is managed or governed; or
- d) the safety of pupils or staff is threatened, including due to breakdown of discipline; or
- e) the Academy is coasting provided he has notified the Academy Trust that it is coasting.

5.C A Termination Warning Notice served under clause 5.B will specify:

- a) the action the Academy Trust must take;
- b) the date by which the action must be completed; and
- c) the date by which the Academy Trust must make any representations, or confirm that it agrees to undertake the specified action.

5.D The Secretary of State will consider any representations from the Academy Trust which he receives by the date specified in the Termination Warning Notice. The Secretary of State may amend the Termination Warning Notice to specify further action which the Academy Trust must take, and the date by which it must be completed.

5.E If the Secretary of State considers that the Academy Trust has not responded to the Termination Warning Notice as specified under clause 5.C(c), or has not completed the action required in the Termination Warning Notice as specified under clauses 5.C(a) and (b) (and any further action specified under

clause 5.D) he may serve a Termination Notice.

### **Termination by the Secretary of State after inspection**

5.F If the Chief Inspector gives notice to the Academy Trust that:

- a) special measures are required to be taken in relation to the Academy;  
or
- b) the Academy requires significant improvement

the Secretary of State may serve a Termination Warning Notice, specifying the date by which the Academy Trust must make any representations.

5.G In deciding whether to give notice of his intention to terminate under clause 5.F, the Secretary of State will have due regard to the overall performance of the Academy Trust.

5.G.1 Not used

5.H If the Secretary of State has served a Termination Warning Notice under clause 5.F and:

- a) has not received any representations from the Academy Trust by the date specified in the notice; or
- b) having considered the representations made by the Academy Trust remains satisfied that this Agreement should be terminated;

he may serve a Termination Notice.

5.I Not used

### **Termination by the Secretary of State**

5.J If the Secretary of State has determined that the Academy will be removed from the Register of Independent Schools and no appeal against that determination is pending, he may serve a Termination Notice.

5.K If at any time before the Academy opens, the total number of prospective

pupils excluding any pupils receiving nursery provision who have accepted offers of places to attend the Academy in September 2020 is less than 240, the Secretary of State may:

- a) require the Academy Trust not to open the Academy until 240 prospective pupils have accepted offers of places to attend the Academy; or
- b) serve a Termination Notice.

5.L If at any time after the Academy has opened, the Secretary of State considers that the Academy is not financially viable because of low pupil numbers, then he may:

- a) serve a Termination Warning Notice; or
- b) serve a Termination Notice.

5.M If both parties agree that the Academy is not financially viable because of low pupil numbers, they may jointly terminate this Agreement after agreeing the precise terms of termination.

5.N Not used

5.O If at any time before the Academy opening date, the Secretary of State considers that:

- a) the Academy would, on opening, provide an unacceptably low standard of education; or
- b) the safety of pupils or staff at the Academy would, on opening, be threatened; or
- c) the staff employed at the Academy are unsuitable; or
- d) there is a serious breakdown in the way the Academy Trust is being managed or governed; or
- e) the buildings and other structures on the Land or the Temporary Site



are unsuitable or the Academy Trust has not obtained Building Regulations approval,

he may either:

- A. require the Academy Trust:
  - i. not to open the Academy; or
  - ii. not to admit pupils of a particular age range, to be determined by the Secretary of State; or
  - iii. not to use any building or other structure on the Land or the Temporary Site,

until each relevant matter in paragraphs (a) to (e) above has been resolved to the Secretary of State's satisfaction; or

- B. serve a Termination Notice.

### **Funding and admission during notice period**

5.P If the Secretary of State serves a Termination Notice under clause 5.A, the Academy Trust may continue during the notice period to admit pupils to the Academy, and to receive GAG and EAG, in accordance with this Agreement.

5.Q If the Secretary of State serves a Termination Warning Notice or a Termination Notice otherwise than under clause 5.A, the Academy Trust may continue during the notice period to admit pupils to the Academy (unless the Secretary of State specifies otherwise), and to receive GAG and EAG, in accordance with this Agreement.

### **Notice of intention to terminate by Academy Trust**

5.R The Secretary of State will, before the start of each Academy Financial Year, provide the Academy Trust with a final funding allocation indicating the level of GAG and EAG to be provided in the next Academy Financial Year (the **"Funding Allocation"**).

- 5.S If the Academy Trust is of the opinion that, after receipt of the Funding Allocation for the next Academy Financial Year (the “**Critical Year**”) and after taking into account all other resources likely to be available to the Academy, including other funds that are likely to be available to the Academy from other academies operated by the Academy Trust (“**All Other Resources**”), it is likely that the cost of running the Academy during the Critical Year would cause the Academy Trust to become insolvent (and for this reason only) then the Academy Trust may give written notice of its intention to terminate this Agreement on 31 August before the Critical Year.
- 5.T Any notice given by the Academy Trust under clause 5.S must be provided to the Secretary of State within six weeks of the Secretary of State issuing the Funding Allocation. The notice given by the Academy Trust under clause 5.S must specify:
- a) the grounds upon which the Academy Trust’s opinion is based, including:
    - i. evidence of those grounds;
    - ii. any professional accounting advice the Academy Trust has received;
    - iii. a detailed statement of steps which the Academy Trust proposes to take to ensure that the running costs of the Academy are reduced such that costs are less than the Funding Allocation and All Other Resources, and the period of time within which such steps will be taken; and
  - b) the shortfall in the Critical Year between the Funding Allocation and All Other Resources expected to be available to the Academy Trust to run the Academy and the projected expenditure on the Academy; and
  - c) a detailed budget of income and expenditure for the Academy during the Critical Year (the “**Projected Budget**”).

- 5.U Both parties will use their best endeavours to agree whether or not the cost of running the Academy during the Critical Year would cause the Academy Trust to become insolvent. Both parties recognise that they will need to engage in a constructive dialogue at the time about how best to provide education for the pupils at the Academy and use their best endeavours to agree a practical solution to the problem.
- 5.V If no agreement is reached by 30 April (or another date if agreed between the parties) as to whether the cost of running the Academy during the Critical Year would cause the Academy Trust to become insolvent, then that question will be referred to an independent expert (the “**Expert**”) for resolution. The Expert’s determination will be final and binding on both parties. The Expert will be requested to specify in his determination the amount of the shortfall in funding (the “**Shortfall**”).
- 5.W The Expert will be an insolvency practitioner with significant professional experience of educational institutions or academies. If the parties fail to agree upon the appointment of the Expert then the Expert will be appointed by the President of the Institute of Chartered Accountants in England and Wales. The Expert’s fees will be borne equally between the parties.
- 5.X The Expert will be required in reaching his determination to take account of advice from an educational specialist who is professionally familiar with the issues arising from the budget management of schools. If the parties fail to agree upon the appointment of the educational specialist then the educational specialist will be appointed by the Chairman of the Specialist Schools and Academies Trust (or any successor or equivalent body). The educational specialist’s fees will be borne equally between the parties.
- 5.Y If the Expert determines that the cost of running the Academy during the Critical Year would cause the Academy Trust to become insolvent, and the Secretary of State will not have agreed to provide sufficient additional funding to cover the Shortfall, then the Academy Trust will be entitled to terminate this Agreement, by notice expiring on 31 August before the Critical Year. Any such notice will be given within 21 days after (a) the Expert’s determination

will have been given to the parties or (b), if later, the Secretary of State will have given written notice of his refusal to provide sufficient additional funding for the Academy to cover the Shortfall.

### **Effect of termination**

- 5.Z If this Agreement is terminated, the Academy will cease to be an Academy within the meaning of sections 1 and 1A of the Academies Act 2010.
- 5.AA Subject to clauses 5.BB and 5.CC, if the Secretary of State terminates this Agreement under clause 5.A, he will indemnify the Academy Trust. If the Secretary of State terminates this Agreement otherwise than under clause 5.A, he may at his discretion indemnify or compensate the Academy Trust.
- 5.BB The amount of any such indemnity or compensation will be determined by the Secretary of State, having regard to representations made to him by the Academy Trust, and will be paid as and when the Secretary of State considers appropriate.
- 5.CC The categories of expenditure incurred by the Academy Trust in consequence of termination, for which the Secretary of State may indemnify the Academy Trust under clauses 5.AA, may include:
- a) staff compensation and redundancy payments;
  - b) compensation payments in respect of broken contracts;
  - c) expenses of disposing of assets or adapting them for other purposes;
  - d) legal and other professional fees; and
  - e) dissolution expenses.
- 5.DD If this Agreement is terminated, and the Academy Trust owns capital assets which have been partly or wholly funded by HM Government, the Academy Trust must, as soon as possible after the termination date:
- a) transfer a proportion of those capital assets, equal to the proportion of the original financial contribution made by HM Government, to a

nominee of the Secretary of State to use for educational purposes; or

- b) if the Secretary of State directs that a transfer under clause 5.DD(a) is not required, pay to the Secretary of State at the termination date (or, by agreement with the Secretary of State, at the date of their subsequent disposal) a sum equivalent to the proportion of the original financial contribution made by HM Government.

5.EE The Secretary of State may:

- a) Waive all or part of the repayment due under sub-clause 5.DD(b) if the Academy Trust obtains his permission to invest the sale proceeds for its charitable purposes; or
- b) direct the Academy Trust to pay all or part of the sale proceeds to the relevant LA.

## **6. OTHER CONTRACTUAL ARRANGEMENTS**

### **Annexes**

6.A Any annexes to this Agreement form part of and are incorporated into this Agreement.

### **The Master Agreement**

6.B Except as expressly provided in this Agreement, all provisions of the Master Agreement have full force and effect.

### **General**

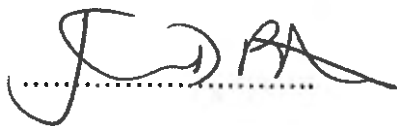
6.C The Academy Trust cannot assign this Agreement.

6.D Failure to exercise, or a delay in exercising, any right or remedy of the Secretary of State under this Agreement (including the right to terminate this Agreement), or a single or partial exercise of such a right or remedy, is not a waiver of, and does not prevent or restrict any initial or further exercise of, that or any other right or remedy.

- 6.E Termination of this Agreement will not affect the accrued rights, remedies, obligations or liabilities of the parties existing at termination.
- 6.F This Agreement may be executed in any number of counterparts, each of which when executed and delivered shall constitute a duplicate original, but all of which will together constitute the same agreement.
- 6.G This Agreement and any dispute or claim arising out of or in connection with it or its subject matter or formation (including non-contractual disputes or claims) shall be governed by and construed in accordance with the law of England and Wales, and submitted to the exclusive jurisdiction of the courts of England and Wales.
- 6.H Not used

This Agreement was executed as a Deed on 29 April 2020

Executed on behalf of the Academy Trust by:



**Director**



**Witness**

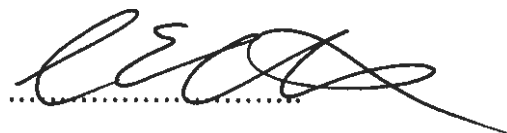
Name: DAVID ARMSTRONG

Address: 24 TICHNICK WAY  
RUSSINGTON  
DONCASTER, DN11 9FL

The Corporate Seal of

**THE SECRETARY OF STATE FOR EDUCATION**

affixed to this deed is authenticated by:



**Duly Authorised**

## **ANNEXES**

### **7. ADMISSION OF CHILDREN AND YOUNG PEOPLE WITH EDUCATION, HEALTH AND CARE PLANS**

“**EHC plan**” means an Education, Health and Care plan made under section 37 of the Children and Families Act 2014.

7.A Except as set out in clause 8 below, the Children and Families Act 2014 imposes duties directly on Academies in respect of pupils with special educational needs, including the admission of pupils with EHC plans. If an Academy Trust considers that a LA should not have named the Academy in an EHC plan, it may ask the Secretary of State to determine whether the LA has acted unreasonably, and to make an order directing the LA to reconsider. The Academy Trust must admit the pupil if such a determination is pending. The Secretary of State’s determination as to whether the LA acted unreasonably will be final, subject to any right of appeal which a parent of the pupil may have to the First Tier Tribunal (Special Educational Needs and Disability) or the Upper Tribunal Administrative Appeals Chamber.

### **8. ADMISSION OF CHILDREN WITH A STATEMENT OF SPECIAL EDUCATIONAL NEEDS**

(Clauses 8.A-8.G only apply where the pupil has a statement of special educational needs (SEN) rather than an EHC plan and where they therefore continue to be subject to the relevant provisions of the Education Act 1996. EHC plans are replacing statements of SEN but although all statements of SEN should have been converted to an EHC plan by the 1 April 2018 this clause is retained to protect pupils who still have a statement of special education need after this date. The detail on the drafting of a statement below is retained to protect pupils in exceptional circumstances.)

“**Statement of SEN**” means a statement made under section 324 of the Education Act 1996.

8.A The Academy Trust must admit all children with a Statement of SEN naming the Academy.



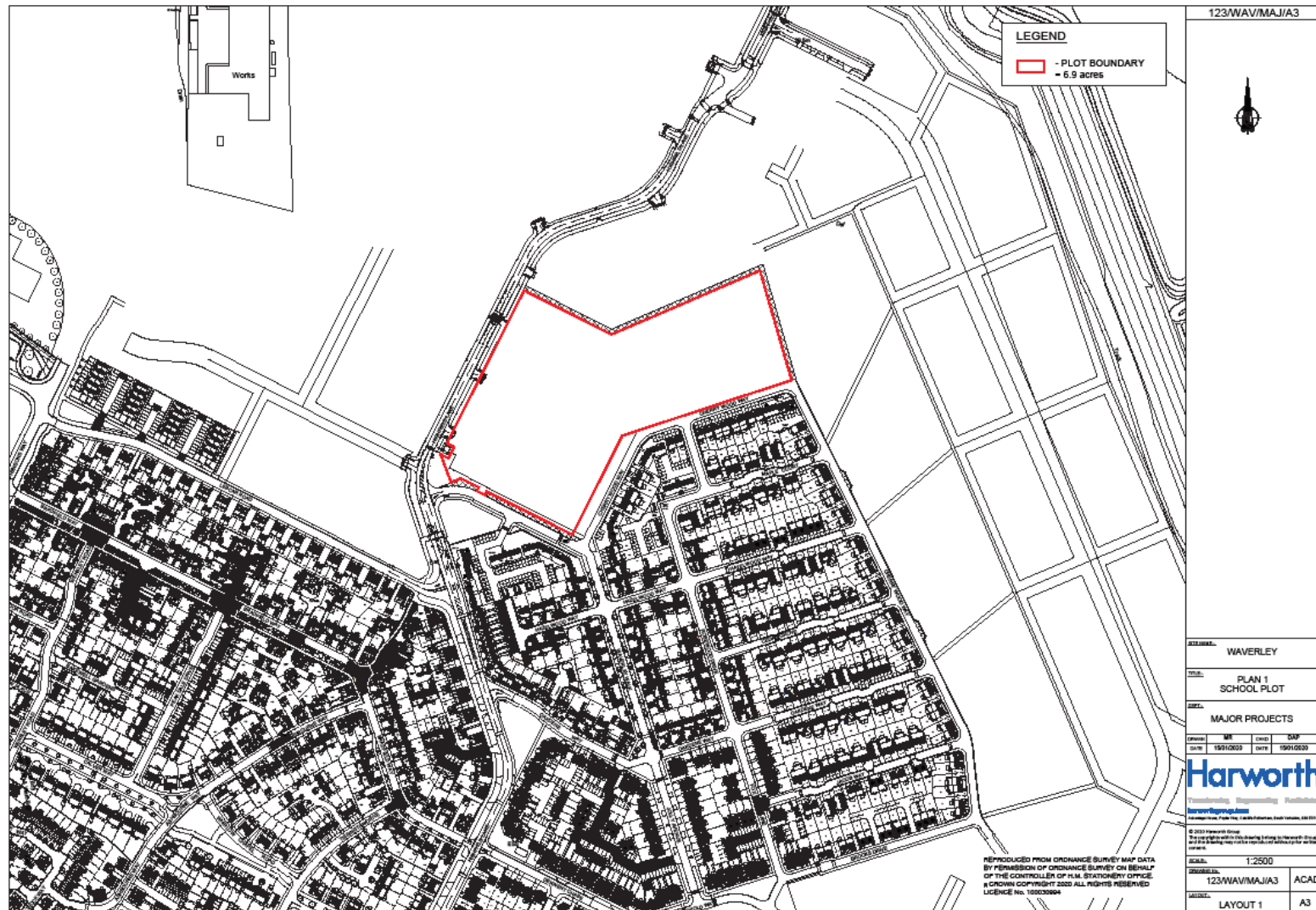
- 8.B The Academy Trust must have regard to the Special Educational Needs Code of practice 2001 when dealing with statements of SEN.
- 8.C Where the LA sends the Academy Trust a draft statement with a proposal that the Academy is named in the final statement, the Academy Trust must respond within 15 working days unless the time period falls within a school holiday that is longer than two weeks in which case the Academy Trust should respond within 15 working days of the end of the school holiday.
- 8.D In its response the Academy Trust must either:
- a. consent to being named in the final statement or
  - b. explain why it believes that admitting the child would be incompatible with the provision of efficient education for other children and the efficient use of resources, including why no reasonable steps could secure compatibility. In doing so the Academy Trust must have regard to the relevant legislation and Code of Practice. If the LA does not agree with the Academy Trust's response, and names the Academy in the child's Statement of SEN, the Academy Trust must admit the child to the school as specified in the statement or otherwise by the LA. The final decision as to whether to name the Academy falls to the LA.
- 8.E If the Academy Trust considers that the LA should not have named the Academy in the statement of SEN, it may ask the Secretary of State to determine whether the LA has acted unreasonably, and to make an order directing the LA to reconsider. The Academy Trust must admit the pupil if such a determination is pending. The Secretary of State's determination will be final, subject only to any right of appeal which a parent of the child may have to the First-tier Tribunal (Special Educational Needs and Disability) or the Upper Tribunal Administrative Appeals Chamber.
- 8.F If a parent of a child for whom the LA maintains a statement appeals to the First-tier Tribunal (Special Educational Needs and Disability) or the Upper Tribunal Administrative Appeals Chamber, either for or against the naming of

the Academy in the child's statement, then the Tribunal's decision will be binding, even if it is different from that of the Secretary of State.

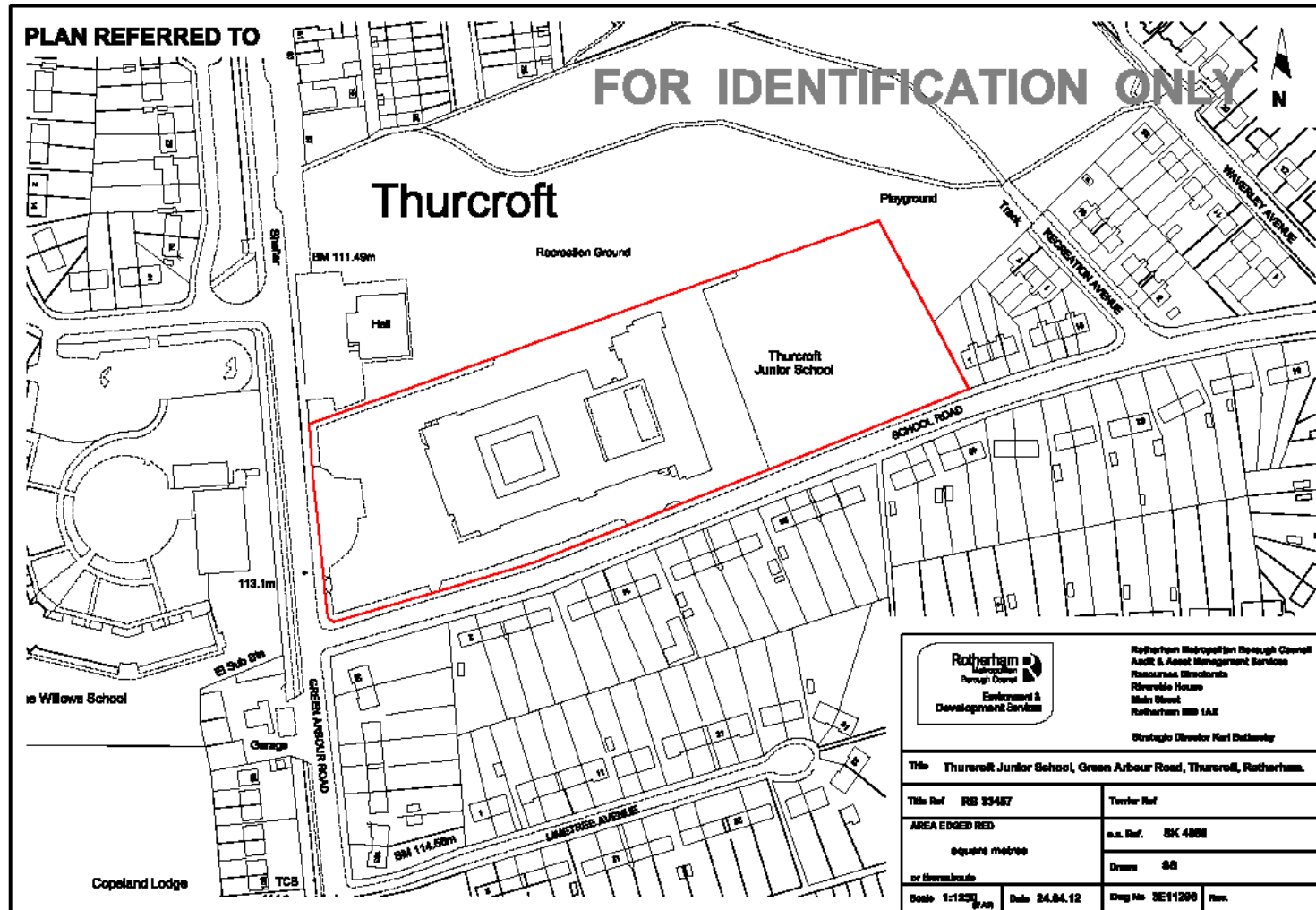
8.G Where it has been finally determined that the Academy be named in a child's Statement of SEN, the Academy Trust must admit the child to the Academy, notwithstanding any other admissions requirements in this Agreement.

8.H Clauses 8.A to 8.G only apply insofar as the relevant provisions of the Children and Families Act 2014 relating to SEN and disability do not apply to Academies and Free Schools.

# Plan 123/WAV/MAJ/A3



Dwg No 3E11296





Department  
for Education

© Crown copyright 2018

You may re-use this document/publication (not including logos) free of charge in any format or medium, under the terms of the Open Government Licence v2.0. Where we have identified any third party copyright information you will need to obtain permission from the copyright holders concerned.

To view this licence:

Visit: [www.nationalarchives.gov.uk/doc/open-government-licence/version/2](http://www.nationalarchives.gov.uk/doc/open-government-licence/version/2)

email: [psi@nationalarchives.gsi.gov.uk](mailto:psi@nationalarchives.gsi.gov.uk)

We welcome feedback. If you would like to make any comments about this publication, please email [AFSPD.feedback@education.gov.uk](mailto:AFSPD.feedback@education.gov.uk), quoting the title of this document. Specific project queries should be sent to the allocated project lead/lead contact.

About this publication:

enquiries [www.education.gov.uk/contactus](http://www.education.gov.uk/contactus)

download [www.gov.uk/government/publications](http://www.gov.uk/government/publications)

Reference: DFE-00440-2014



Follow us on Twitter:  
[@educationgovuk](https://twitter.com/educationgovuk)



Like us on Facebook:  
[facebook.com/educationgovuk](https://facebook.com/educationgovuk)